

Features

- Ultra low capacitance: 0.6pF typical (I/O to I/O)
- Ultra low leakage: nA level
- Low operating voltage: 3.3V
- Low clamping voltage
- Up to 4 lines protects
- Leadless flow-through package
- Complies with following standards:
 - IEC 61000-4-2 (ESD) immunity test
Air discharge: ±20kV
Contact discharge: ±20kV
 - IEC61000-4-4 (EFT) 40A (5/50ns)
 - IEC61000-4-5 (Lightning) 5A (8/20µs)
- RoHS Compliant

Mechanical Characteristics

- Package: DFN2510-10 (2.5×1.0×0.5mm)
- Lead Finish: Matte Tin
- Case Material: "Green" Molding Compound.
- UL Flammability Classification Rating 94V-0
- Moisture Sensitivity: Level 3 per J-STD-020
- Terminal Connections: See Diagram

Applications

- HDMI 1.3 & 1.4, USB 2.0 & 3.0 and MDDI ports
- Monitors and flat panel displays
- Set-top box and Digital TV
- Video graphics cards
- Digital Video Interface (DVI)
- Notebook Computers
- PCI Express and Serial SATA Ports

Part Number Code

| | | | | | | | | |
|----------|----------|----------|----------|----------|----------|----------|----------|----------|
| E | S | D | 0 | 5 | 1 | 1 | L | 1 |
| 1 | 2 | 3 | 4 | 5 | 6 | 7 | 8 | 9 |

| Product Type | |
|--------------|---------------------------------------|
| ESD | TSK Electrostatic suppressor ESD Type |

| Reverse Working Voltage (V) | |
|-----------------------------|------|
| 3V3 | 3.3V |
| 05 | 5V |
| 16 | 16V |

| Line | |
|------|--------|
| 1 | 1-Line |
| 2 | 2-Line |
| 3 | 3-Line |

| Capacitance Type | |
|------------------|--------|
| L | Low |
| X | Normal |

| directional | |
|-------------|-----|
| 0 | Bi |
| 1 | Uni |

| Size | |
|------|---------|
| 1 | 0201 |
| 2 | 0402 |
| 3 | DFN0603 |
| 4 | DFN1006 |

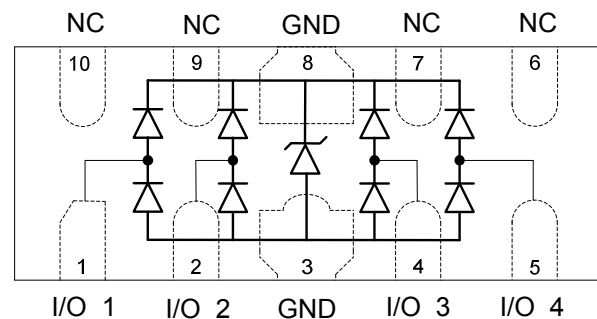
★ Code 4 to 9 is optional

Description

The ESD3V341LA is an ultra low capacitance TVS array, utilizing leading monolithic silicon technology to provide fast response time and low ESD clamping voltage, making this device an ideal solution for protecting voltage sensitive high-speed data lines. The ESD3V341LA has an ultra-low capacitance with a typical value at 0.6pF, and complies with the IEC 61000-4-2 (ESD) standard with ±15kV air and ±8kV contact discharge. It is assembled into a 10-pin 2.5x1.0x0.5mm lead-free DFN package. The flow through style package allows for easy PCB layout and matched trace lengths necessary to maintain consistent impedance between high speed differential lines such as USB 3.0 and HDMI. The small size, ultra-low capacitance and high ESD surge protection make ESD3V341LA an ideal choice to protect HDMI, MDDI, USB 3.0 and other high speed ports.



Dimensions and Pin Configuration



Circuit and Pin Schematic

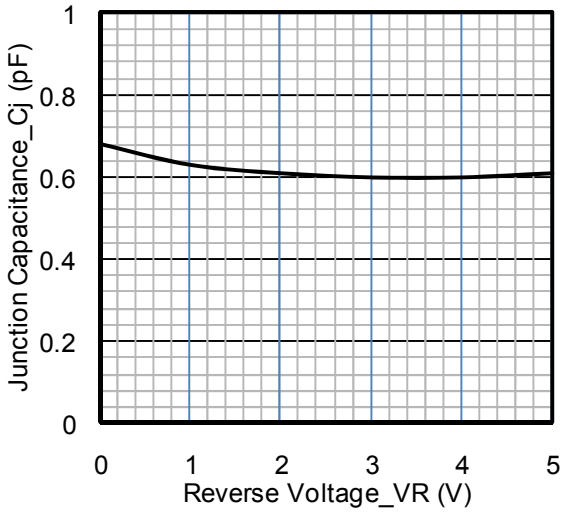
Absolute Maximum Ratings ($T_A=25^\circ\text{C}$ unless otherwise specified)

| Parameter | Symbol | Value | Unit |
|--|------------------|-------------|------------------|
| Peak Pulse Power (8/20 μs) | Ppk | 50 | W |
| Peak Pulse Current (8/20 μs) | I _{PP} | 5 | A |
| ESD per IEC 61000-4-2 (Air) | V _{ESD} | ± 20 | kV |
| ESD per IEC 61000-4-2 (Contact) | | ± 20 | |
| Operating Temperature Range | T _J | -55 to +125 | $^\circ\text{C}$ |
| Storage Temperature Range | T _{stg} | -55 to +150 | $^\circ\text{C}$ |

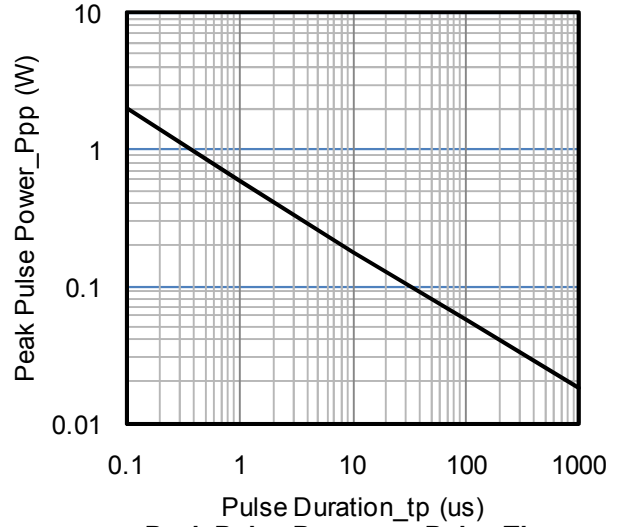
Electrical Characteristics ($T_A=25^\circ\text{C}$ unless otherwise specified)

| Parameter | Symbol | Min | Typ | Max | Unit | Test Condition |
|-------------------------|------------------|-----|-----|-----|---------------|--|
| Reverse Working Voltage | V _{RWM} | | | 3.3 | V | Any I/O pin to ground |
| Punch-Through Voltage | V _{PT} | 3.5 | | | V | I _T = 2 μA , any I/O pin to ground |
| Snap-Back Voltage | V _{SB} | 2.8 | | | V | I _T = 50mA, any I/O pin to ground |
| Reverse Leakage Current | I _R | | | 0.5 | μA | V _{RWM} = 3.3V, any I/O pin to ground |
| Clamping Voltage | V _C | | | 6.5 | V | I _{PP} = 1A (8 x 20 μs pulse), any I/O pin to ground |
| Clamping Voltage | V _C | | | 10 | V | I _{PP} = 5A (8 x 20 μs pulse), any I/O pin to ground |
| Junction Capacitance | C _J | | 0.6 | 0.8 | pF | V _R = 0V, f = 1MHz, between I/O pins |

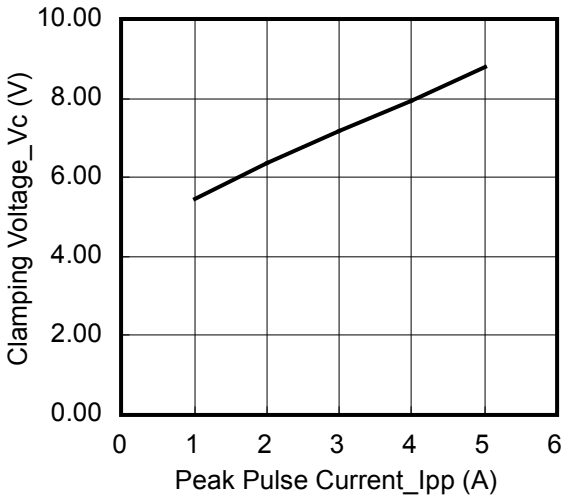
Typical Performance Characteristics (TA=25°C unless otherwise Specified)



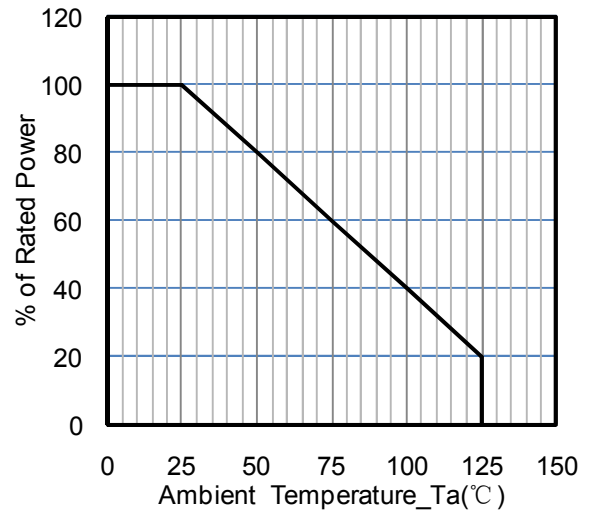
Junction Capacitance vs. Reverse Voltage



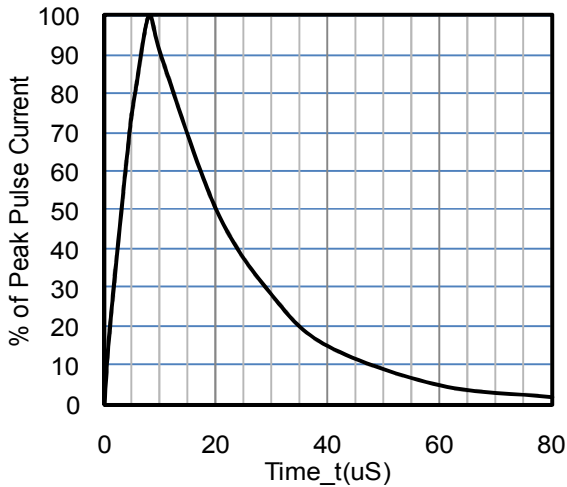
Peak Pulse Power vs. Pulse Time



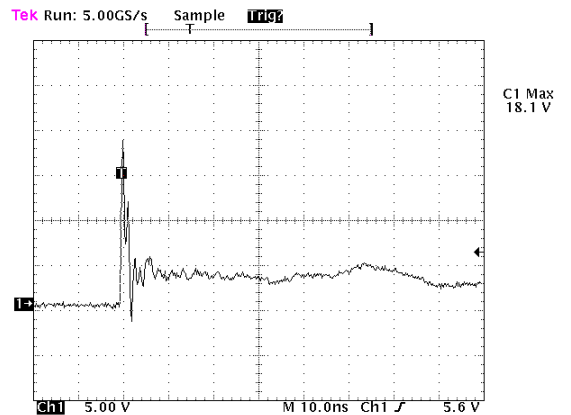
Clamping Voltage vs. Peak Pulse Current



Power Derating Curve



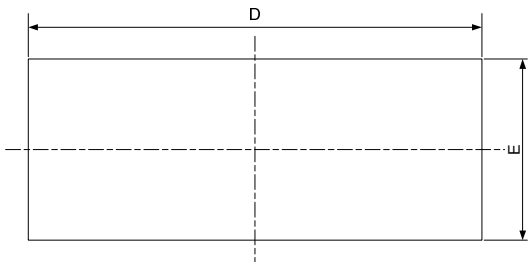
8 X 20uS Pulse Waveform



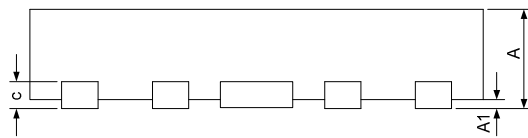
ESD Clamping Voltage

8 kV Contact per IEC61000-4-2

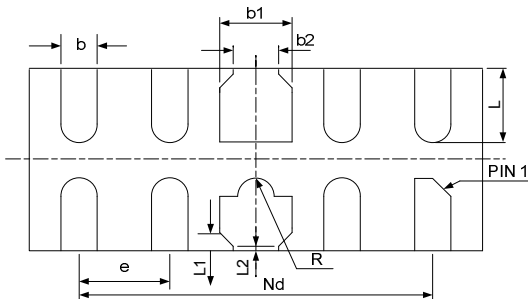
DFN2510-10 Package Outline Drawing



TOP VIEW



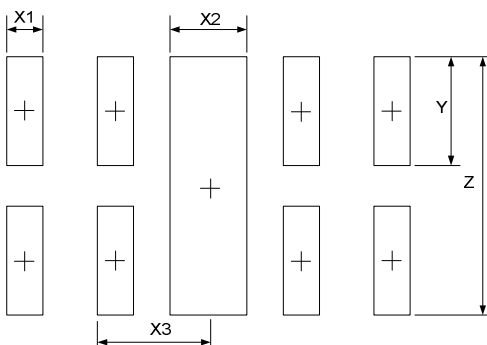
SIDE VIEW



BOTTOM VIEW

| SYM | DIMENSIONS | | | | | |
|-----|-------------|------|------|----------|-------|-------|
| | MILLIMETERS | | | INCHES | | |
| | MIN | NOM | MAX | MIN | NOM | MAX |
| A | 0.45 | 0.50 | 0.55 | 0.018 | 0.020 | 0.022 |
| A1 | 0.00 | 0.02 | 0.05 | 0.000 | 0.001 | 0.002 |
| b | 0.15 | 0.20 | 0.25 | 0.006 | 0.008 | 0.010 |
| b1 | 0.35 | 0.40 | 0.45 | 0.014 | 0.016 | 0.018 |
| b2 | 0.20 | 0.25 | 0.30 | 0.008 | 0.010 | 0.012 |
| c | 0.10 | 0.15 | 0.20 | 0.004 | 0.006 | 0.008 |
| D | 2.45 | 2.50 | 2.55 | 0.098 | 0.100 | 0.102 |
| e | 0.50BSC | | | 0.020BSC | | |
| Nd | 2.00BSC | | | 0.080BSC | | |
| E | 0.95 | 1.00 | 1.05 | 0.038 | 0.040 | 0.042 |
| L | 0.35 | 0.40 | 0.45 | 0.014 | 0.016 | 0.018 |
| L1 | 0.075REF | | | 0.003REF | | |
| L2 | 0.050REF | | | 0.002REF | | |
| h | 0.08 | 0.12 | 0.15 | 0.003 | 0.005 | 0.006 |
| R | 0.05 | 0.10 | 0.15 | 0.002 | 0.004 | 0.006 |

Suggested Land Pattern



| SYM | DIMENSIONS | |
|-----|-------------|--------|
| | MILLIMETERS | INCHES |
| X1 | 0.200 | 0.008 |
| X2 | 0.400 | 0.016 |
| X3 | 0.500 | 0.020 |
| Y | 0.600 | 0.024 |
| Z | 1.400 | 0.056 |

Ordering Information

| Part Number | Packaging | Reel Size |
|-------------|------------------|-----------|
| ESD3V341LA | 3000/Tape & Reel | 7 inch |