

GLASS PASSIVATED 3 PHASE BRIDGE RECTIFIERS

REVERSE VOLTAGE - **50 to 1600** Volts
 FORWARD CURRENT - **35** Amperes

Features

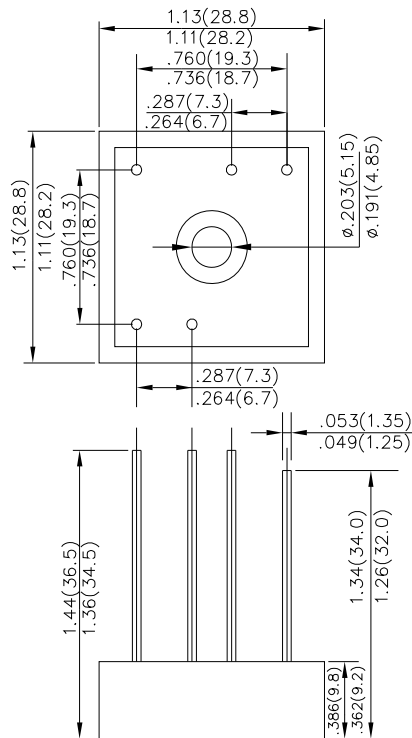
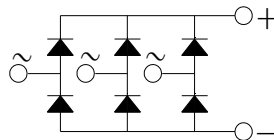
- Low Forward Voltage Drop
- High Current Capability
- High Reliability
- High Surge Current Capability
- Ideal for Printed Circuit Boards

MECHANICAL DATA

- Case: Epoxy Case with Heat Sink Internally Mounted in the Bridge Encapsulation
- Terminals: Plated Leads Solderable per MIL-STD-202, Method 208
- Polarity: As Marked on Body
- Weight: 21 grams (approx.)
- Mounting Position: Bolt Down on Heatsink With Silicone Thermal Compound Between Bridge and Mounting Surface for Maximum Heat Transfer Efficiency
- Mounting Torque: 2 N · m

Dimensions In Inches and (millimeters)

SBR-W



Part Number Code

T	S	B	R	3	5	0	0	G	W
1	2	3	4	5	6	7	8	9	10

Product Type		Rectified Current		Peak Repetitive Reverse Voltage (V)		Internal code rule	
TSK	TSBR series	25	25A	00	50V	ZZZ	
		35	35A	01	100V		
				02	200V		

MAXIMUM RATINGS AND ELECTRICAL CHARACTERISTICS

Rating at 25°C ambient temperature unless otherwise specified.

Single phase, half wave, 60Hz, resistive or inductive load. For capacitive load, derate current by 20%

VOLTAGE RATINGS												
CHARACTERISTICS	SYMBOL	-00	-01	-02	-04	-06	-08	-10	-12	-14	-16	UNIT
Peak Repetitive Voltage	V _{RRM}											
Working Peak Reverse Voltage	V _{RWM}	50	100	200	400	600	800	1000	1200	1400	1600	V
DC Blocking Voltage	V _R											
Peak Non-Repetitive Reverse Voltage	V _{RSM}	75	150	275	500	725	900	1100	1300	1500	1700	V
RMS Reverse Voltage	V _{R(RMS)}	35	70	140	280	420	560	700	840	980	1120	V
FORWARD CONDUCTION												
CHARACTERISTICS	SYMBOL	TSBR35GW										UNIT
Maximum Average Forward Rectified Current @TC=55°C	I _O	35										A
Peak Forward Surge Current t=8.3ms at 60HZ	I _{FSM}	450										A
I ² t Rating for fusing	I ² t	840										A ² S
Maximum Forward Voltage drop per element at 17.5A Peak	V _F	1.1										V
Reverse peak current	I _R	5										μA
		3										mA
RMS Isolation Voltage from Case to Lead	V _{ISO}	2500										V
THERMAL CHARACTERISTICS												
Operating Temperature Range	T _J	-40 to +150										°C
Storage Temperature Range	T _{STG}	-40 to +125										°C
Thermal Resistance Junction to Case at DC Operation per Bridge	R _{θJC}	0.9										°C/W

RATING AND CHARACTERISTIC CURVES

FIG.1-MAXIMUM FORWARD SURGE CURRENT

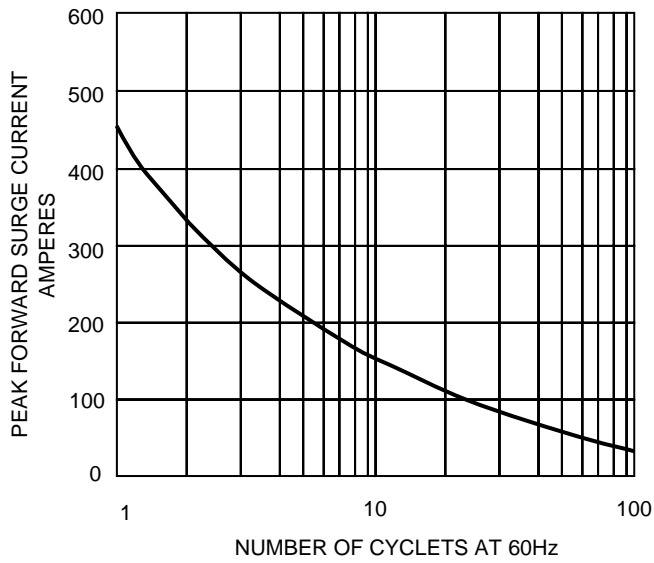


FIG.2- DERATING CURVE OUTPUT RECTIFIED CURRENT

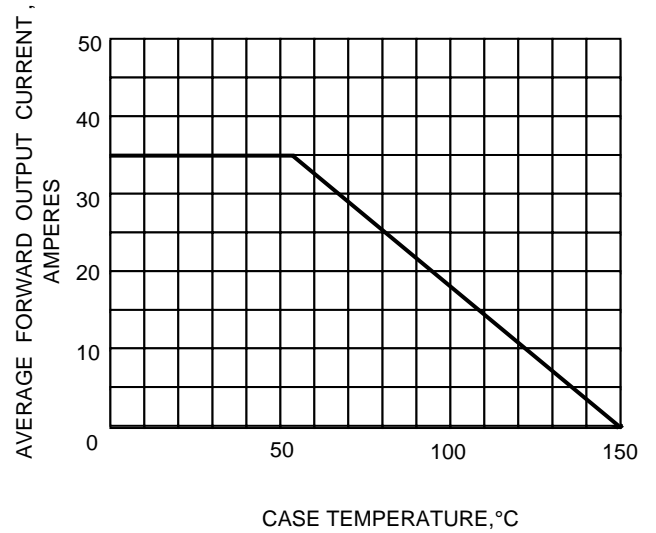


FIG.3-TYPICAL FORWARD CHARACTERISTICS

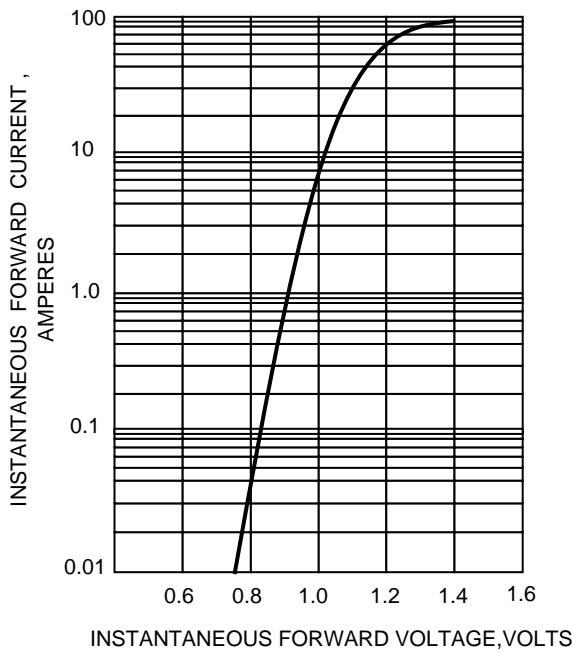
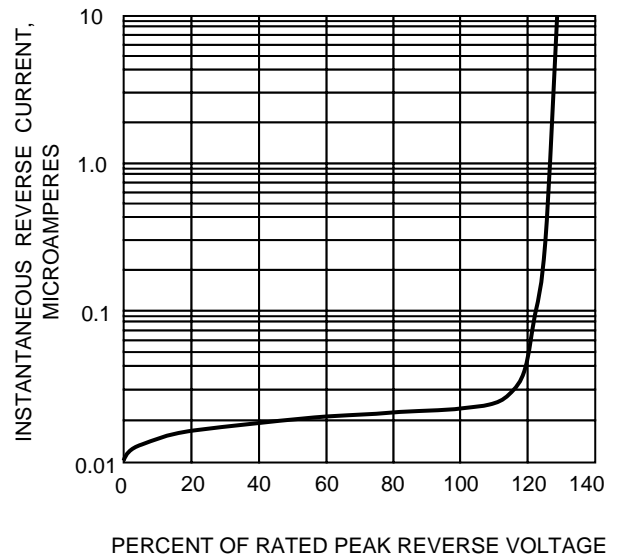


FIG.4-TYPICAL REVERSE CHARACTERISTICS



The cruve graph is for reference only, can't be the basis for judgment(曲线图仅供参考)!