

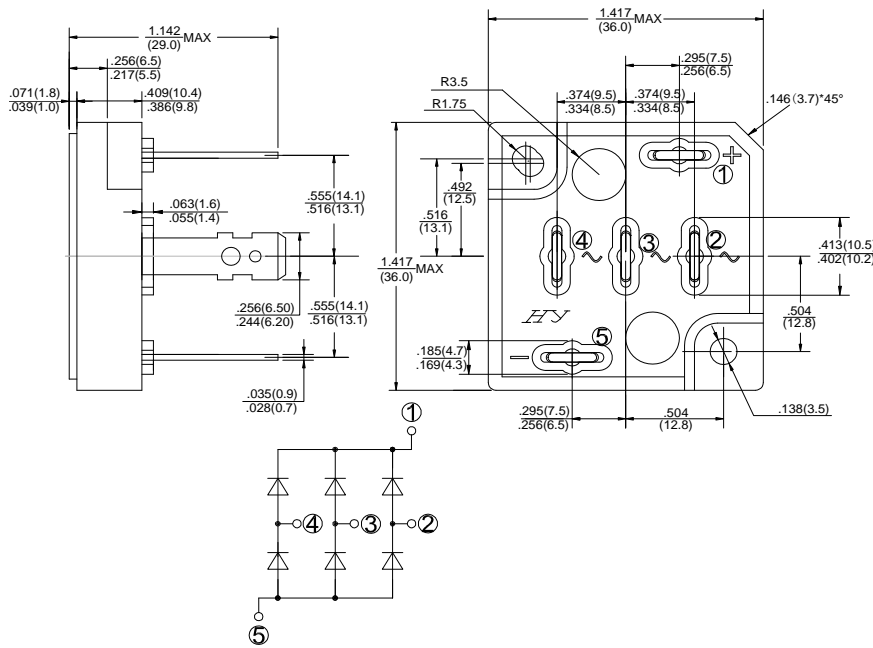
**GLASS PASSIVATED  
3 PHASE BRIDGE RECTIFIERS**

REVERSE VOLTAGE - **1600Volts**  
FORWARD CURRENT - **35Amperes**

**Features**

- Surge overload -350 amperes peak
- Low forward voltage drop
- Mounting position :Any
- Weight: 45g

**Dimensions In Inches and (milimeters)**



**SCVB**

**Part Number Code**

<b>T</b>	<b>S</b>	<b>C</b>	<b>3</b>	<b>5</b>	<b>V</b>	<b>B</b>	<b>8</b>	<b>0</b>
1	2	3	4	5	6	7	8	9

Product Type	
TSK	TSC35VB series

Peak Repetitive Reverse Voltage (V)	
80	800V
160	1600V

## MAXIMUM RATINGS AND ELECTRICAL CHARACTERISTICS

Rating at 25°C ambient temperature unless otherwise specified.

Resistive or inductive load 60Hz.

For capacitive load, derate current by 20%

CHARACTERISTICS	SYMBOL	TSC35VB160	UNIT
Maximum Recurrent Peak Reverse Voltage	VRRM	1600	V
Maximum RMS Bridge Input Voltage	VRMS	1120	V
Maximum Average Forward Rectified Output Current @ Tc=55°C	I(AV)	35	A
Peak Forward Surge Current 8.3ms Single Half Sine-Wave Super Imposed on Rated Load	IFSM	350	A
Current Squared time (1ms<t<10ms)	I <sup>2</sup> t	508	A <sup>2</sup> S
Dielectric Strength	Vdis	2000	V
Mounting Torque	TOR	0.8	N.m
Maximum Forward Voltage Drop Per Element at 12.5A Peak	VF	1.1	V
Maximum Reverse Current at Rated DC Blocking Voltage Per Element @ TA=25°C	IR	100	μA
Typical Thermal Resistance (Note1)	RθJC	Max: 0.7	°C/W
Operating Temperature Range	TJ	-55 to +150	°C
Storage Temperature Range	TSTG	-55 to +150	°C

NOTES: 1. Thermal Resistance Junction to case.

2. The typical data above is for reference only(典型值仅供参考).

RATING AND CHARACTERISTIC CURVES

FIG.1-MAXMUN FORWARD SURGE CURRENT

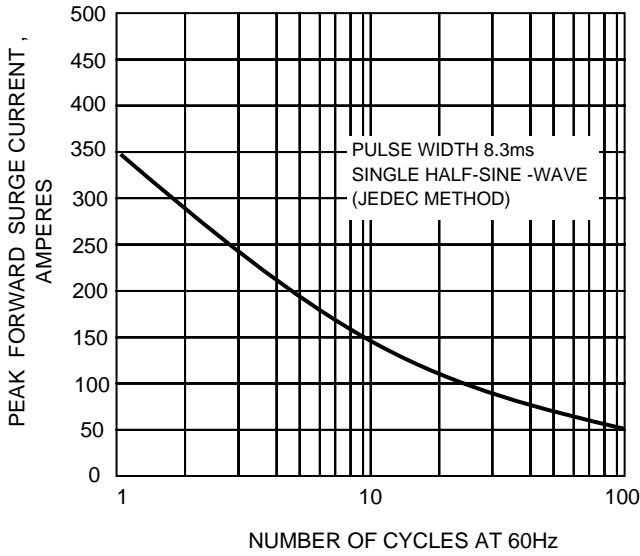


FIG.2- DERATING CURVE OUTPUT RECTIFIED CURRENT

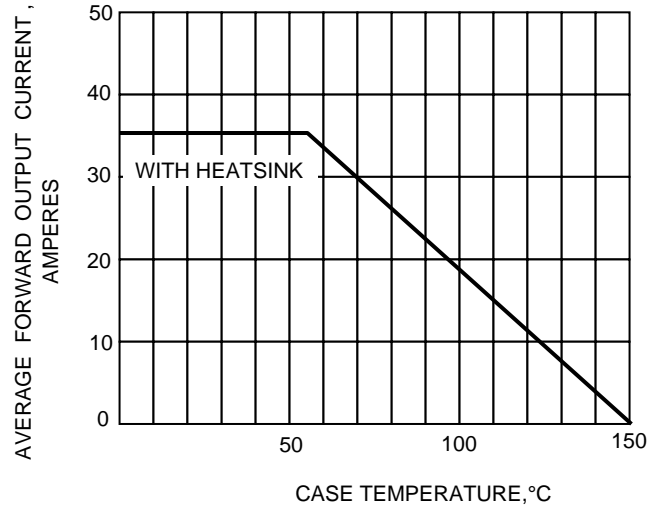


FIG.3-TYPICAL FORWARD CHARACTERISTICS

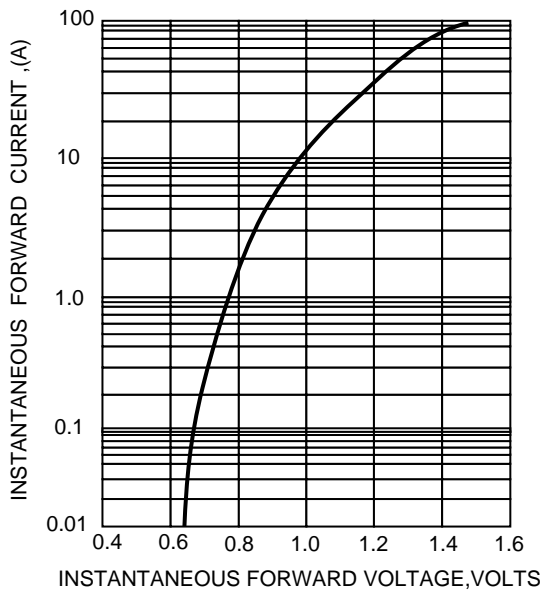
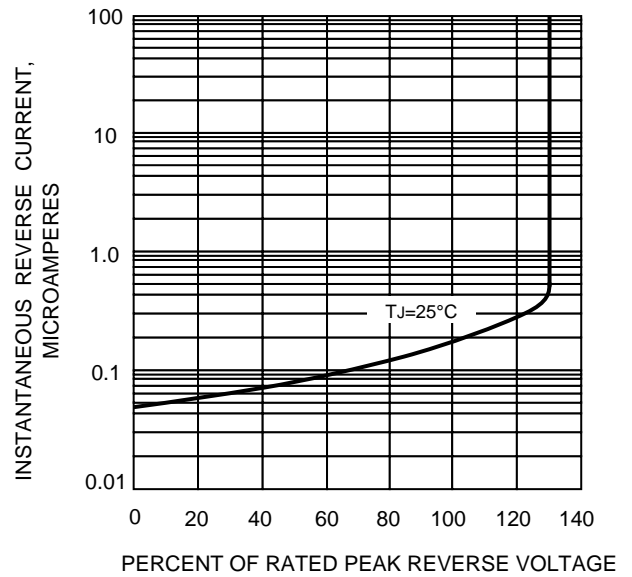


FIG.4-TYPICAL REVERSE CHARACTERISTICS



The cruve graph is for reference only, can't be the basis for judgment(曲线图仅供参考)!